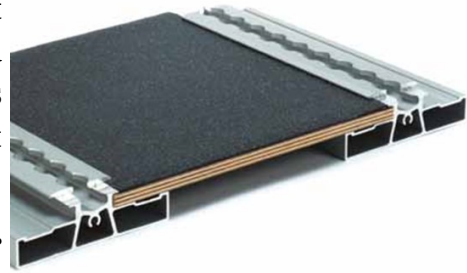


Hybrid aluminum wood wheelchair flooring

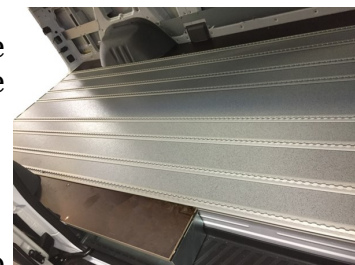
The hybrid aluminum wood wheelchair flooring is a revolutionary new floor system, with a very light weight, that combines high-quality **aluminum extrusion with Koivu**, a premium plywood, from Finnish forests slow-growing. This gives more flexibility in the positioning of the tracks, makes it much lighter and very resistant.



The **L-floor hybrid aluminum wood wheelchair flooring** is certified for use with many M1, M2 and M3 vehicle brands and models and with a wide variety of wheelchair tie-downs, seat and seat bases.

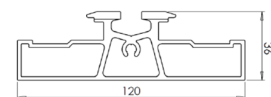
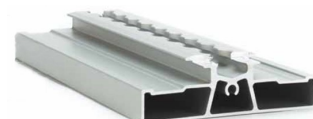
Technical specifications of the hybrid floor

- **Quick and easy installation:** Delivered, fully assembled, in 1 or 2 parts, with exact dimensions. No cut required. The vinyl can also be glued if required by the customer.
- **Flexible:** Tracks positioned in the exact position required by the customer without constraint. The profile can be cut to position the rail closest to the wheel passage. Several seats homologated.
- **Lightweight:** 25% lighter than any other aluminum flooring.
- **Resistant:** slow-growing hardwood with phenolic resin glued into multilayer panels make a resistant plywood, the same one used to build scaffolds.
- **Environmentally friendly:** From slow-growing Nordic forests, a fully renewable source.
- **Silencer:** Excellent acoustic absorption thanks to Koivu plywood.
- **Waterproof.**
- **Seat legs:** Designed to fix any type of fixed seat or swivel seat existing in the market.



Technical specification for the aluminum extrusion

Thickness (mm)	36
Profile material	Premium grade anodised aluminum
Weight	2,5 Kg/m

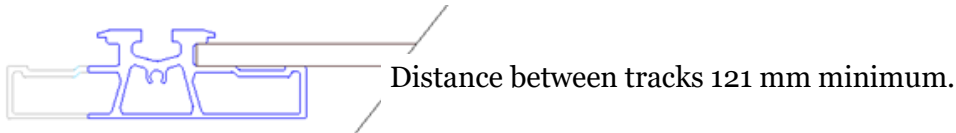


Address: BP19, 80490 Hallencourt, France

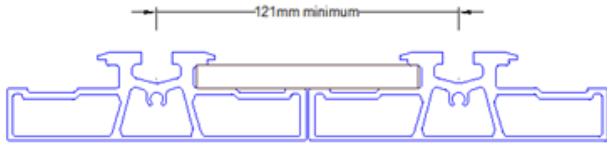
Tel : +33 (0)3 22 25 58 65 / Mobile : + 33 (0)6 45 72 46 90

contact@access-ability.eu
www.access-ability.eu

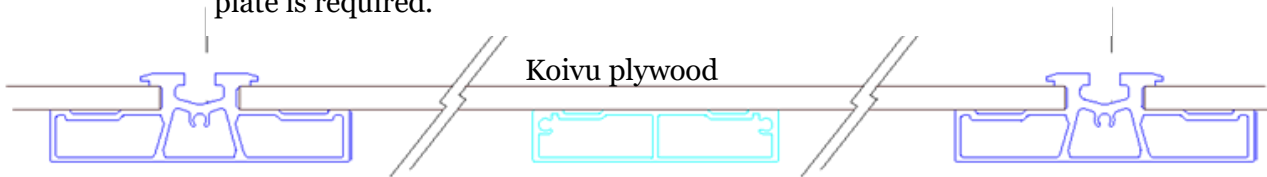
Technical specifications of the hybrid floor



The profile can be cut in order to better position the tracks closer to the wheels passage.



If the distance between the tracks is more than 300 mm, a support plate is required.



Homologation and compatibility (ECE R14)

APPROVED VEHICLE	Swivel Seat	Fixed Seat	Over the wheel arch	Wheelchair
Mercedes Sprinter (SWB, MWB, LWB, XLWB)	√	√	√	√
Volkswagen Crafter (SWB, MWB, LWB, XLWB)	√	√	√	√
Volkswagen Crafter (SWB, MWB, LWB, XLWB) New Model	√	√	√	√
Traffic (SWB, LWB)	√	√	√	√
Peugeot Boxer (SWB, MWB, LWB, XLWB)	√	√	√	√
Citroen Jumper (SWB, MWB, LWB, XLWB)	√	√	√	√
Fiat Ducato (SWB, MWB, LWB, XLWB)	√	√	√	√
Ford Transit (SWB, MWB, LWB, LWB Jumbo)	√	√	√	√
Renault Master (SWB, MWB, LWB)	√	√	√	√
Opel Movano (SWB, MWB, LWB)	√	√	√	√
Mercedes Vito/Viano (SWB, LONG, XLONG)	√	√	√	√
Volkswagen T5 / Transporter	√	√	√	√
Ford Custom	√	√	√	√
IVECO	√	√	√	√
Fiat Scudo / Jumpy / Expert (SWB, LWB) 2007-2015	√	√	√	√

Homologated seats

Fixed seats

GRL M1



Jany 805



Swivel seats

Sunviauto
ISIS



Jany 862



Triflex

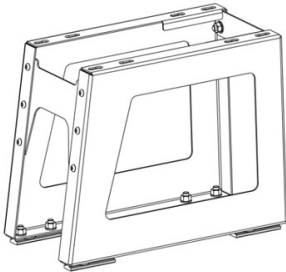


The above seats have different characteristics and options.
Don't hesitate to contact us for more information.

Homologated seat legs

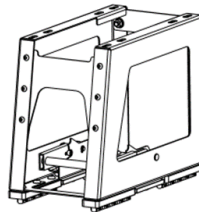
Fixed seat leg

Fixed and swivel seats

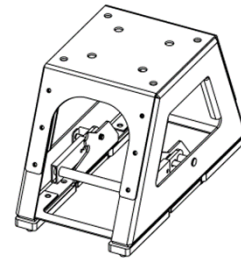


Mobile seat leg Quicklock

Fixed seats



Swivel seats



Wheel arch bridge available for 335mm height (short and long) and 385mm height (short).

Third point installation kit available if needed.